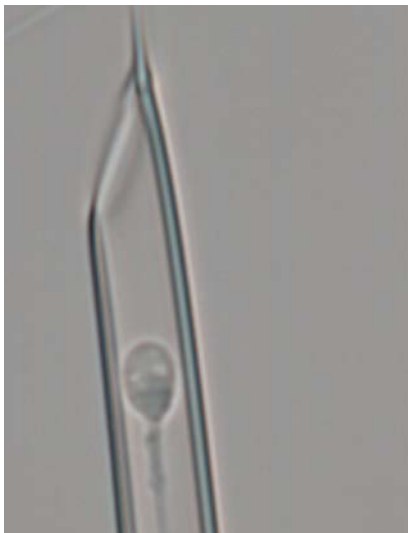


OCTAX cytoScreen™

system for high resolution dry IMSI

- Compatible with existing Hoffman ICSI microscopes
- No oil immersion, no DIC required– integrates into existing workflow
- High resolution digital camera
- Hardware zoom for optimum image quality
- OCTAX Adaptive Electronic Condenser™ for automatic contrast adjustment and highest optical solution(optional)
- Easy integration into existing OCTAX environment (camera, EyeWare imaging software)
- Total magnification adjustable, up to 7,000 x



I. System components

Condenser	Existing Hoffman's or relief contrast OCTAX Adaptive Electronic Condenser™ (optional)
Objective	60 x Large field of view allows sperm manipulation without changing magnification
Camera	3.0 Megapixel
Software	Image database, function key image capture, biometric measurement tools, function key online zoom-in function, adjustable contrast enhancement OCTAX polarAIDE™ spindle and zona imaging system and OCTAX Laser™ microsurgical laser can be integrated into the same software platform



II. Features and performance

Oil immersion	No Easy handling, no cleaning,
Microscopic stage	Works with or without heated glass plate
Sharpness of the image	Good due to combination of selected high resolution optical components improved through digital image processing of the live video
Total magnification on the screen	> 7,000 x with intermediate magnification 1.6 x
Analysis of sperm head shape and vacuoles	Feasible without any restriction
Dishes required	Glass bottom dishes are recommended; plastic dishes can be used
Compatibility	Can be mounted to most current inverted microscope models used for ICSI